

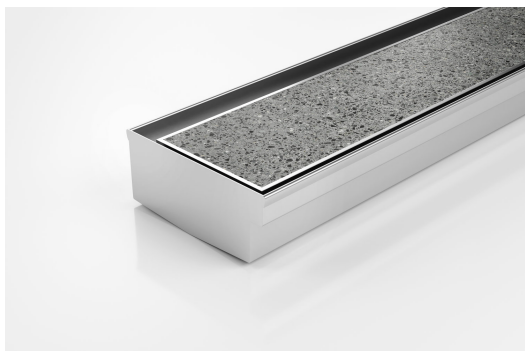


ARCHITECTURAL  
GRATES + DRAINS



# 100TiTDiBF

## Threshold for Bifold Doors



**Code** 100TiTDiBF

**Range** Threshold

**Grate Style** Ti

**Category** Made-to-Length

**Channel Material** Stainless Steel

**Steel Grade** 316

The 100TiTDiBF is a Threshold Drain for Bi-Fold and Top-Hung doors featuring our 100mm wide Tile Insert and custom channel depth.

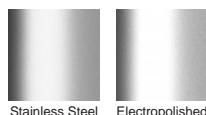
Allows door tracks to be drained while having internal and external floor surfaces with no step down.

Please be aware that depending on the installation environment, for a pool installation or close to a surf beach, you may need to have your stainless steel grates electropolished.

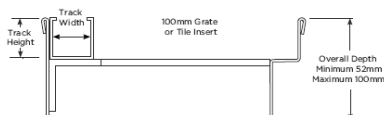
### SPECIFICATIONS + DIMENSIONS

Channel Width	105mm
Channel Depth	52mm - Adjustable
Length(s)	As Required
Outlet Size	N/A

### STORMTECH COLOUR FINISHES



Electroplate finishes subject to natural variation with time and local environment. Factors such as pools/surf beaches may require electropolishing. Contact us for suitability.



Grates longer than 1500mm supplied in sections. Tile Inserts longer than 1200mm supplied in sections. Channels over 3000mm supplied in sections with joiner. +/-2mm tolerance on dimensions.

### PRODUCT APPLICATIONS

Aged / Health Care Drainage      Suspended Slab Drainage  
Balcony Drainage  
Commercial Drainage  
Multi-Residential Drainage  
Special Needs Drainage  
Threshold Drainage

Copyright © Stormtech Pty Ltd. Patent 733361. Drawings not to scale, please use dimensions shown.  
Downloaded 20/07/2025 (please check for updates)



Visit **stormtech.com.au**  
for tools + inspiration.

Phone **1300 653 403**

Email **info@stormtech.com.au**