

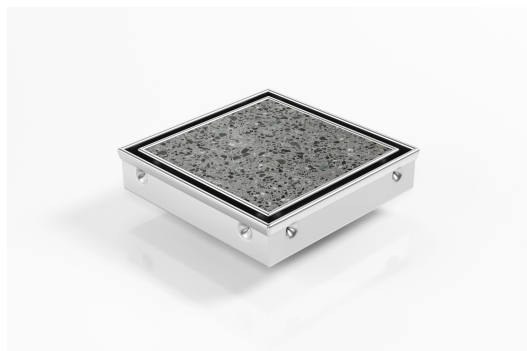


ARCHITECTURAL
GRATES + DRAINS



SQP100Ti33DN80

Square Floor Waste



Code SQP100Ti33DN80

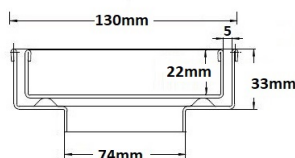
Range Square

Grate Style Ti

Category Square Floor Waste

Channel Material Stainless Steel

Steel Grade 316



Grates longer than 1500mm supplied in sections. Tile Inserts longer than 1200mm supplied in sections. Channels over 3000mm supplied in sections with joiner. +/-2mm tolerance on dimensions.

The SQP100Ti is a premium floor waste drain.

The SQ Range of floor waste units allow the integration of a standard floor waste with Stormtech linear drainage.

Tile Insert Floor waste measures 130mm x 130mm.

It is suitable for tiles / stone up to 20mm thick.

SPECIFICATIONS + DIMENSIONS

Channel Width	130mm - 130mm
Channel Depth	33mm
Length(s)	130mm
Outlet Size	DN80

STORMTECH COLOUR FINISHES



Electroplate finishes subject to natural variation with time and local environment. Factors such as pools/surf beaches may require electropolishing. Contact us for suitability.

PRODUCT APPLICATIONS

Bathroom Drainage	Paved Area Drainage
Balcony Drainage	Shower Drainage
Commercial Drainage	Special Needs Drainage
Courtyard / Patio Drainage	Threshold Drainage
Driveway Drainage	Suspended Slab Drainage
Pool and Spa Area Drainage	Wet Area Drainage

Copyright © Stormtech Pty Ltd. Patent 733361. Drawings not to scale, please use dimensions shown.
Downloaded 21/07/2025 (please check for updates)



Visit **stormtech.com.au**
for tools + inspiration.

Phone **1300 653 403**

Email **info@stormtech.com.au**